

SIERRA MUSIC PRESENTS
THE PAT METHENY BIG BAND SERIES

AFTERNOON

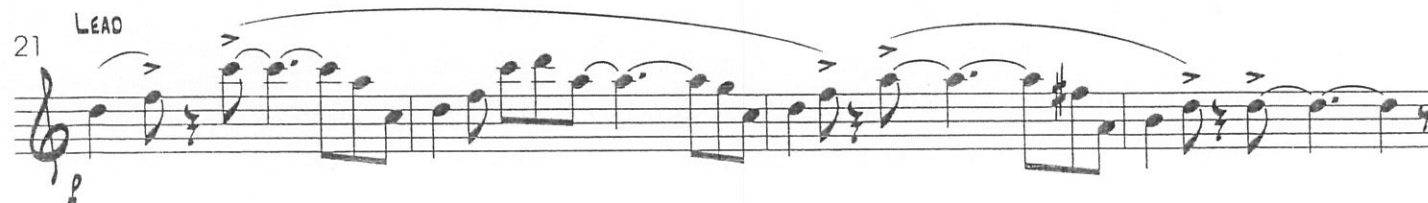
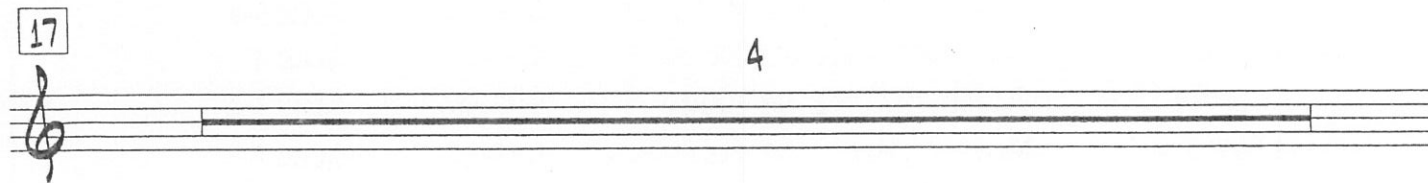
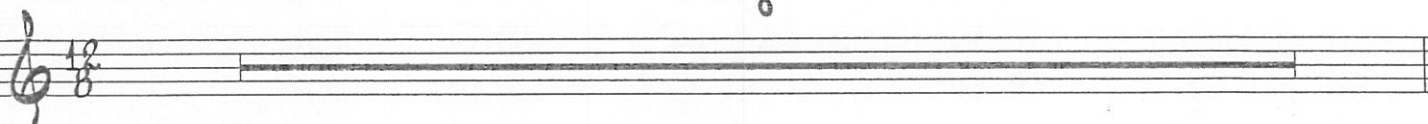
RECORDED BY THE PAT METHENY GROUP ON THE CD "SPEAKING OF NOW"

ALTO SAXOPHONE 1 (SOLO)

COMPOSED BY PAT METHENY
ARRANGED BY BOB CURNOW

♩ = 72 EASY SWING

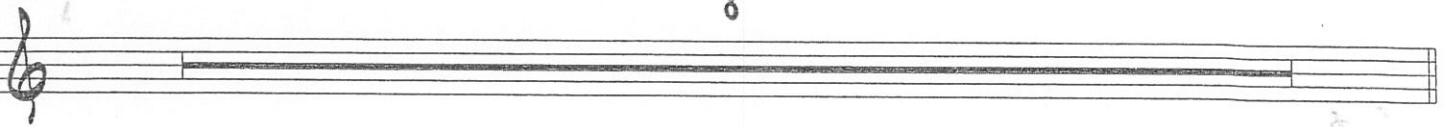
8



ALTO SAXOPHONE 1 - AFTERNOON - PG. 2

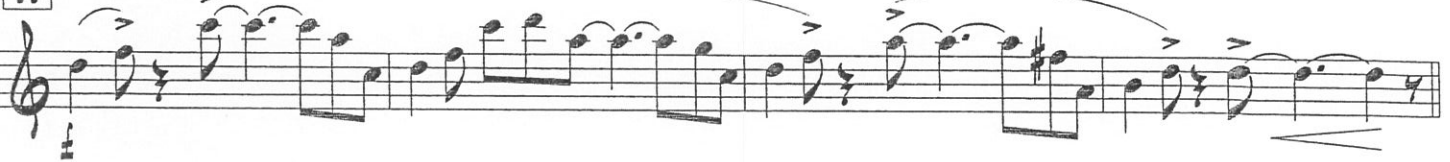
8

25



33

SOLI



37



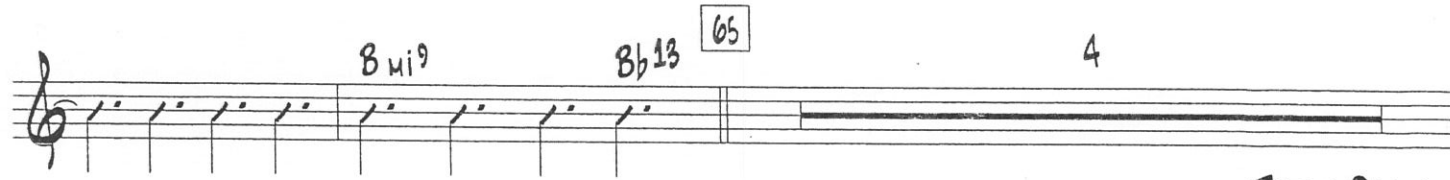
41



55



59



TURN PAGE

ALTO SAXOPHONE 1 - AFTERNOON - PG. 3

69 LEAD

mf

Detailed description: This staff contains measures 69 through 72. It begins with a treble clef and a dynamic marking of *mf*. The music is written in a 4/4 time signature. Measure 69 starts with a quarter note G4, followed by an eighth note A4, and a quarter note B4. Measure 70 contains a series of eighth notes: G4, A4, B4, C5, B4, A4, G4, F4. Measure 71 continues with eighth notes: E4, D4, C4, B3, A3, G3, F3, E3. Measure 72 concludes with a quarter note G3, a quarter note F3, and a quarter note E3. A long slur covers measures 70 and 71, and another slur covers measure 72.

73

mf

Detailed description: This staff contains measure 73. It starts with a treble clef and a dynamic marking of *mf*. The measure contains a whole note G3, followed by a whole rest. The next measure contains a whole note F3, followed by a whole rest. The third measure contains a whole note E3, followed by a whole rest. The fourth measure contains a whole note D3, followed by a whole rest. The fifth measure contains a whole note C3, followed by a whole rest. The sixth measure contains a whole note B2, followed by a whole rest. The seventh measure contains a whole note A2, followed by a whole rest. The eighth measure contains a whole note G2, followed by a whole rest. The staff ends with a double bar line.

78

p pp

RITARDO

Detailed description: This staff contains measures 78 through 80. It begins with a treble clef. Measure 78 is a whole rest. Measure 79 is a whole rest. Measure 80 starts with a quarter note G3, followed by a quarter note F3, and a quarter note E3. A dynamic marking of *p* is placed below the first note, and *pp* is placed below the second note. A slur covers the notes in measure 80. The staff ends with a double bar line. Below the staff, the word "RITARDO" is written with a dotted line following it.

SIERRA MUSIC PRESENTS
THE PAT METHENY BIG BAND SERIES

AFTERNOON

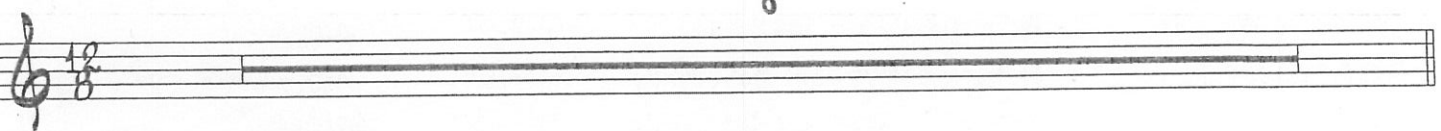
RECORDED BY THE PAT METHENY GROUP ON THE CD "SPEAKING OF NOW"

ALTO SAXOPHONE 2

COMPOSED BY PAT METHENY
ARRANGED BY BOB CURNOW

$\text{♩} = 72$ EASY SWING

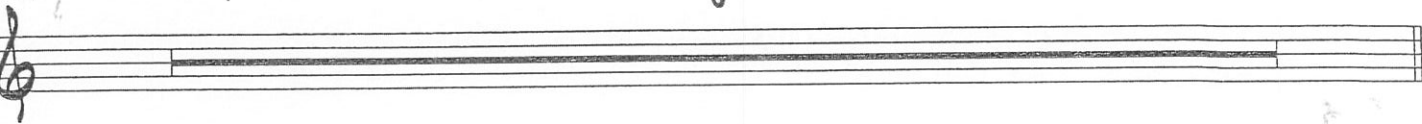
8



ALTO SAXOPHONE 2 - AFTERNOON - PG. 2

25

8

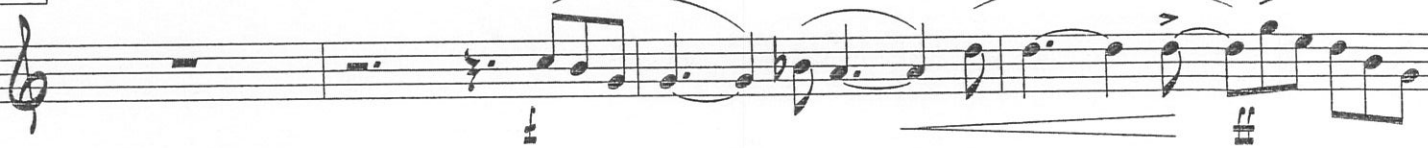


33

SOLI



37



41



47

4



(SMALL GROUP)

51



55

2



TURN PAGE

ALTO SAXOPHONE 2 - AFTERNOON - PG. 3

59

mf

mf

65

69

73 (SMALL GROUP)

77

p

pp

RITARDO