

# CUTE

Composed and Arranged by  
NEAL HEFTI

1st Eb ALTO SAXOPHONE

MEDIUM SWING  $\text{♩} = 96$

**A** LIGHT *mf*

**B**

1. 2. *Solo* *mf*

**C** EASY

**D** No Solo

**E** Solo *mf*



1st Eb ALTO SAXOPHONE

(F)

(G)

(H) DRUM BACKGROUND

(I)

(J)

1

2

(K) Light

mf

(L) SOFTER 2x

1 2 3

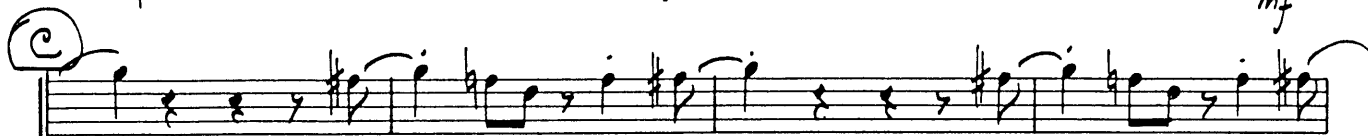
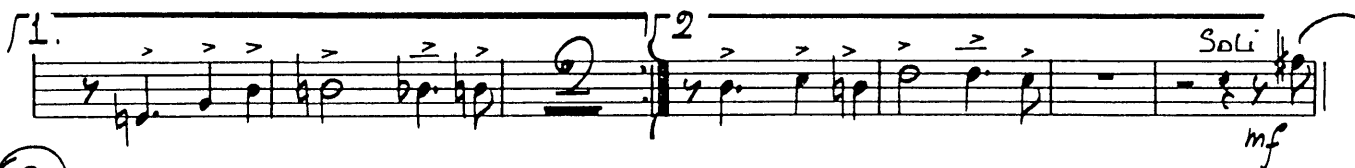
ppp

# CUTE

Composed and Arranged by  
NEAL HEFTI

2nd E♭ALTO SAXOPHONE

MEDIUM SWING  $\text{♩} = 96$



2nd E $\flat$  ALTO SAXOPHONE

(F)

(G)

(H) DRUM BACKGROUND

1. 2.

(I)

(J)

1.

2.

(K) Light

mf

(L) SOFTER 2x

1. 2.

# CUTE

Composed and Arranged by  
NEAL HEFTI

1st B♭ TENOR SAXOPHONE

MEDIUM SWING  $\text{♩} = 96$

**A** Light  
mf

**B**

1. 2. Soli  
mf

**C**

**D** No Soli

**E** Soli  
mf



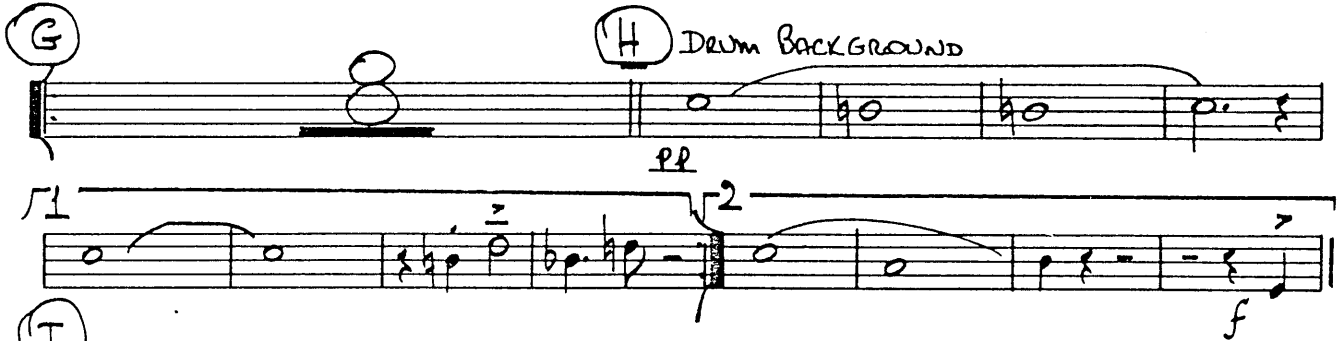
© Copyright 1958 by Neal Hefti Music, Inc., 57 West 56th St., New York 19, N. Y.  
This arrangement © Copyright 1963 by Neal Hefti Music, Inc.  
International Copyright Secured Printed in U.S.  
All rights reserved including the right of public performance for profit

DB 103

1st B $\flat$  TENOR SAXOPHONE

(F) 



(G)  (H) DRUM BACKGROUND  
pp

(I)  f

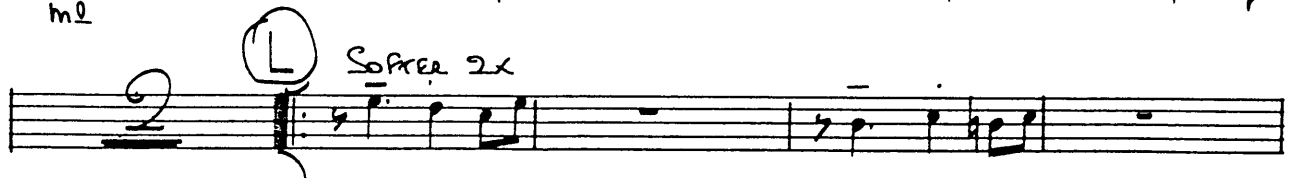


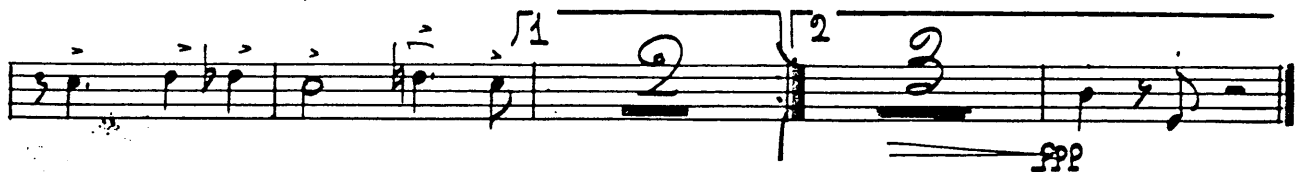
(J) 

1.  f

2.  f

(K) LIGHT  mf

(L) SOFTER 2x 

 pp

# CUTE

2nd Bb TENOR SAXOPHONE

Composed and Arranged by  
NEAL HEFTI

MEDIUM SWING  $\text{♩} = 96$

**A** LIGHT *mf*

**B**

1. 2. *Soli* *mf*

**C** EASY *mf*

**D** No Soli

**E** Soli *mf*



2nd B $\flat$  TENOR SAXOPHONE

(F)

Handwritten musical notation for measure F, consisting of two staves. The first staff contains a melodic line with eighth and quarter notes, and the second staff contains a bass line with a whole note and a half note.

(G) (H) DEEM BACKGROUND

Handwritten musical notation for measures G and H. Measure G is a whole rest. Measure H contains a melodic line with a half note and a quarter note, and a bass line with a half note. The instruction "DEEM BACKGROUND" is written above the staff. A "PR" marking is present below the staff.

(I)

Handwritten musical notation for measure I, consisting of two staves with a melodic line and a bass line. A dynamic marking "f" is written below the staff.

(J)

Handwritten musical notation for measure J, consisting of two staves with a melodic line and a bass line. A dynamic marking "f" is written below the staff.

(K) LIGHT

Handwritten musical notation for measure K, consisting of two staves with a melodic line and a bass line. A dynamic marking "mf" is written below the staff.

(L) SOFTER 2x

Handwritten musical notation for measure L, consisting of two staves with a melodic line and a bass line. A dynamic marking "ppp" is written below the staff.

# CUTE

E♭ BARITONE SAXOPHONE

Composed and Arranged by  
NEAL HEFTI

MEDIUM SWING  $\text{♩} = 96$

Musical score for E♭ Baritone Saxophone, featuring sections A through E, with dynamics like *mf* and *Solo*.



E♭ BARITONE SAXOPHONE

(F)

(G)

(H) DRUM BACKGROUND

(I)

(J)

(K) LIGHT

(L) Sopranos 2x